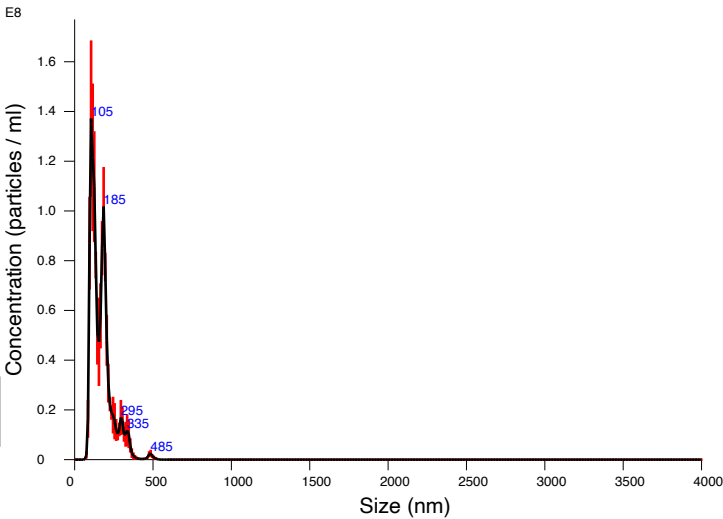


FTLA Concentration / Size graph for Experiment:
Capture 2022-09-23 13-19-25



Averaged FTLA Concentration / Size for Experiment:
Capture 2022-09-23 13-19-25
Error bars indicate + / - 1 standard error of the mean

<div>Included Files</div> <p>Capture 2022-09-23 13-20-05 Capture 2022-09-23 13-20-38 Capture 2022-09-23 13-21-12</p> <div>Details</div> <p>NTA Version: NTA 3.4 Build 3.4.4 Script Used: SOP Standard Measurement 04-43-57PM 02~ Time Captured: 13:19:25 23/09/2022 Operator: Ruth Pre-treatment: Sample Name: hom. = 15m (3) Diluent: Remarks:</p> <div>Capture Settings</div> <p>Camera Type: sCMOS Laser Type: Blue405 Camera Level: 12 Slider Shutter: 1200 Slider Gain: 146 FPS: 18.7 Number of Frames: 374 Temperature: 22.0 °C Viscosity: (Water) 1.0 cP Dilution factor: Dilution not recorded</p> <div>Analysis Settings</div> <p>Detect Threshold: 12 Blur Size: Auto Max Jump Distance: Auto: 9.1 - 9.6 pix</p>	<div>Results</div> <p>Stats: Merged Data</p> <p>Mean: 168.9 nm Mode: 107.6 nm SD: 69.0 nm D10: 101.5 nm D50: 155.4 nm D90: 264.9 nm</p> <p>Stats: Mean +/- Standard Error</p> <p>Mean: 169.0 +/- 6.2 nm Mode: 105.1 +/- 2.7 nm SD: 68.3 +/- 4.5 nm D10: 101.2 +/- 1.8 nm D50: 151.3 +/- 7.9 nm D90: 261.1 +/- 18.7 nm</p> <p>Concentration: 1.26e+09 +/- 4.10e+07 particles/ml 68.7 +/- 2.2 particles/frame 74.6 +/- 1.7 centres/frame</p>
--	--